

Input DLIS Files

DEFAULT Splice_TLD_MCFL_CNL_029CUP FN:1 PRODUCER 14-Mar-2008 10:19 907.1 M 55.4 M

Output DLIS Files

DEFAULT TLD_MCFL_CNL_HRLA_030PUP FN:48 PRODUCER 14-Mar-2008 10:29 907.1 M 269.9 M
 REDUCED_DLIS TLD_MCFL_CNL_HRLA_030PUP FN:49 PRODUCER 14-Mar-2008 10:29 907.1 M 269.9 M

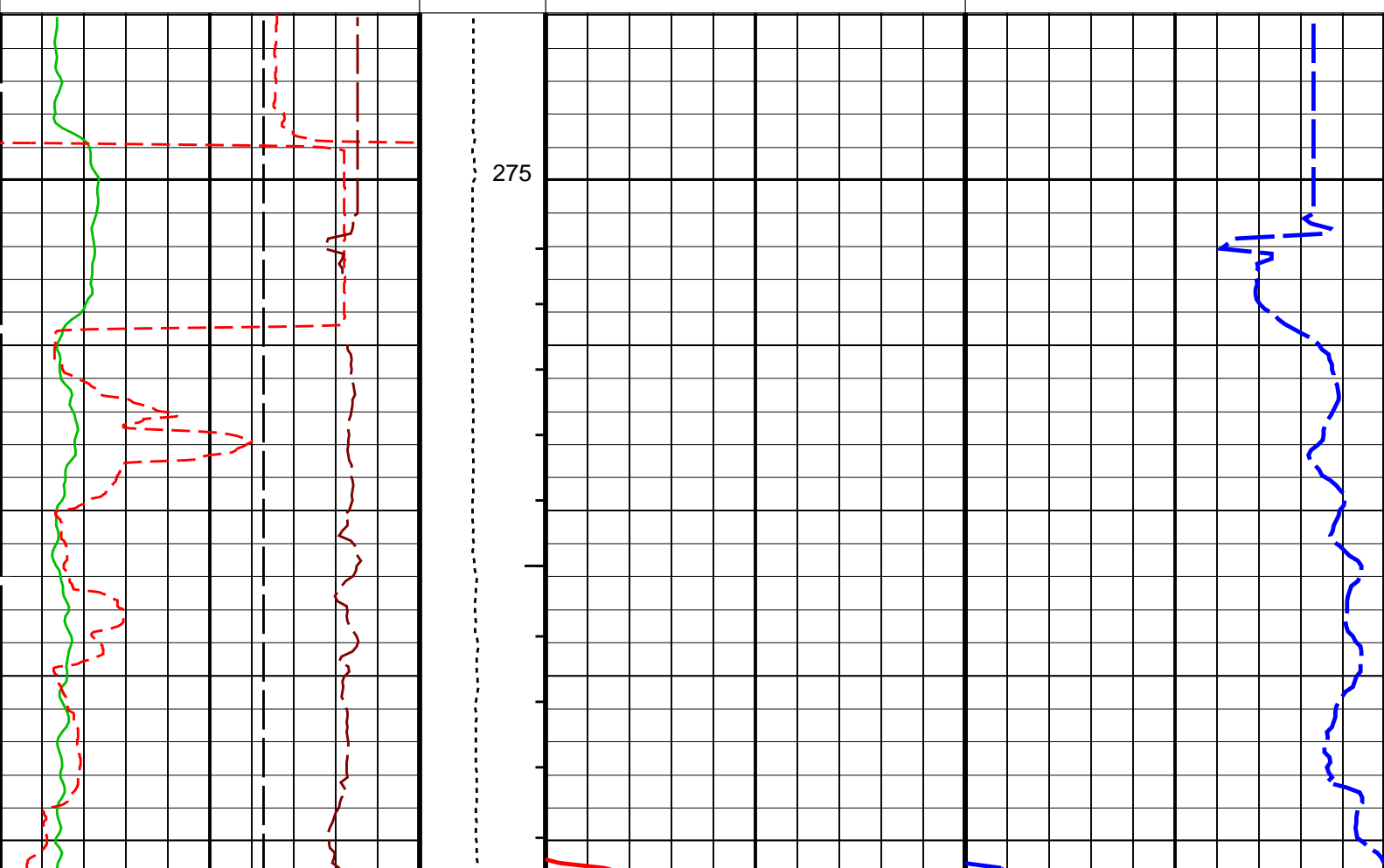
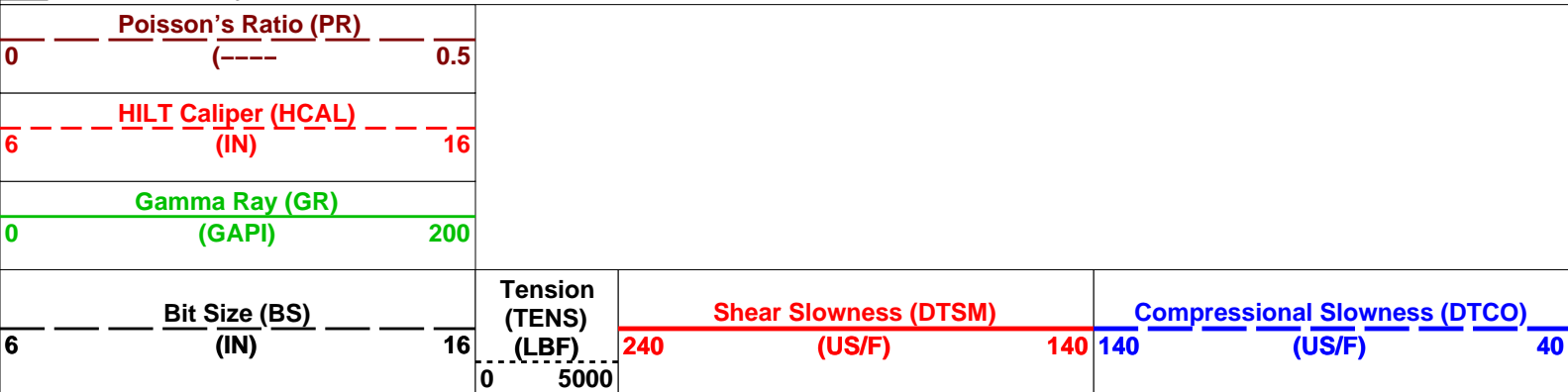
OP System Version: 15C0-309 MCM

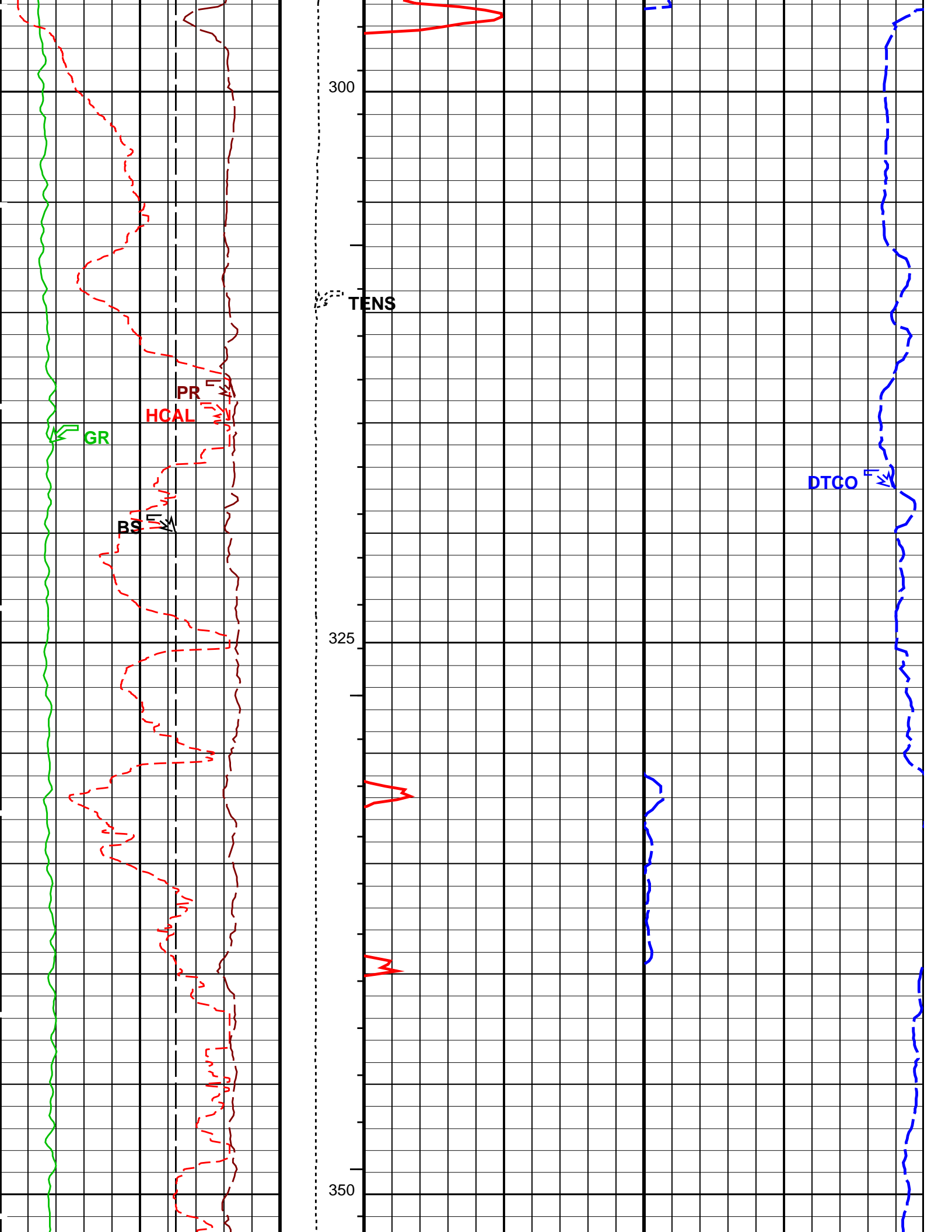
HILTB-FTB	SRPC-3546-Q1_2008_OP15	HRLT-B	SRPC-3546-Q1_2008_OP15
PPC1-B	SRPC-3546-Q1_2008_OP15	MAXS-B	SKK-3442-MAST
MAPC-B	SKK-3442-MAST	EDTC-B	SKK-3493-EDTCB
BSP-AH-169	SRPC-3546-Q1_2008_OP15		

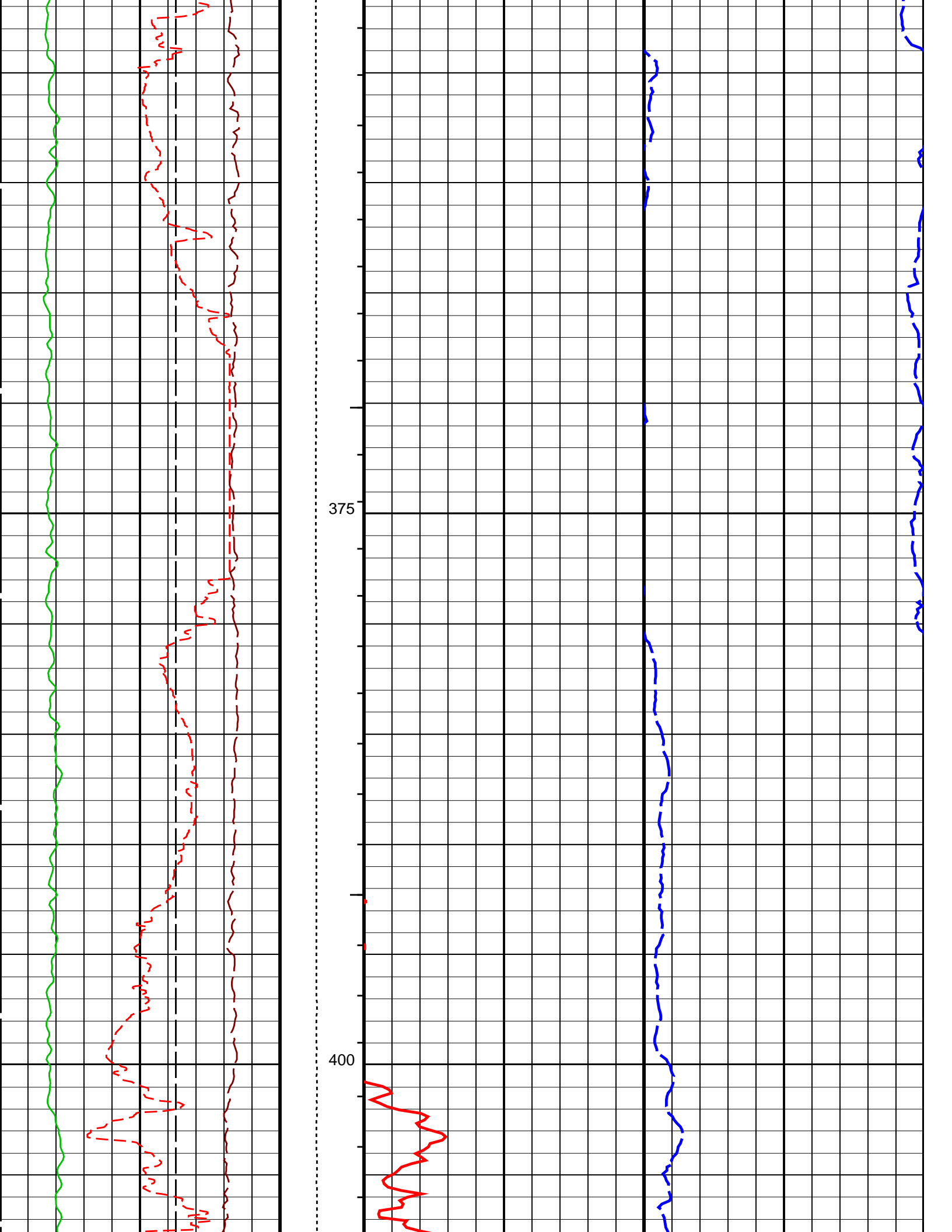
PIP SUMMARY

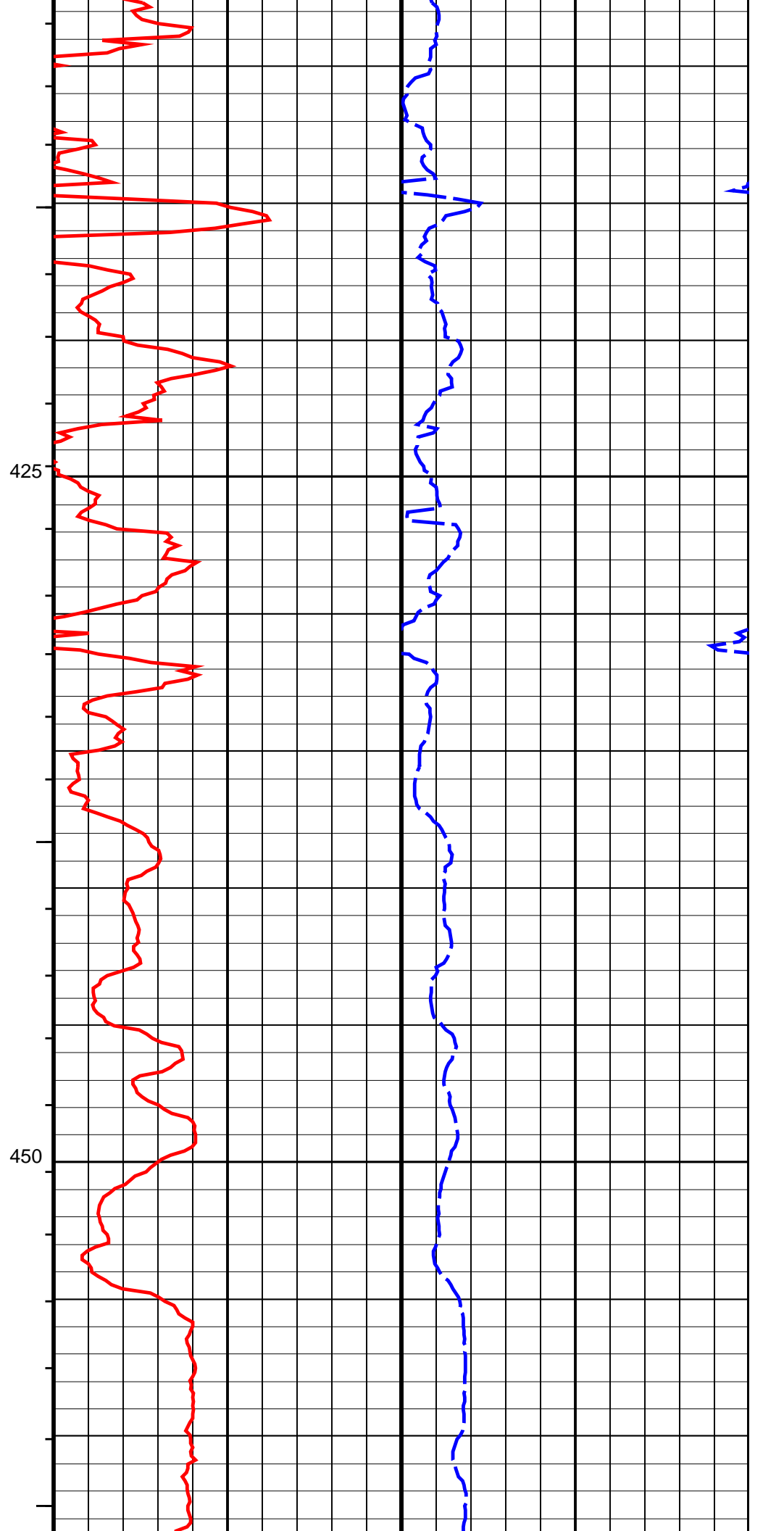
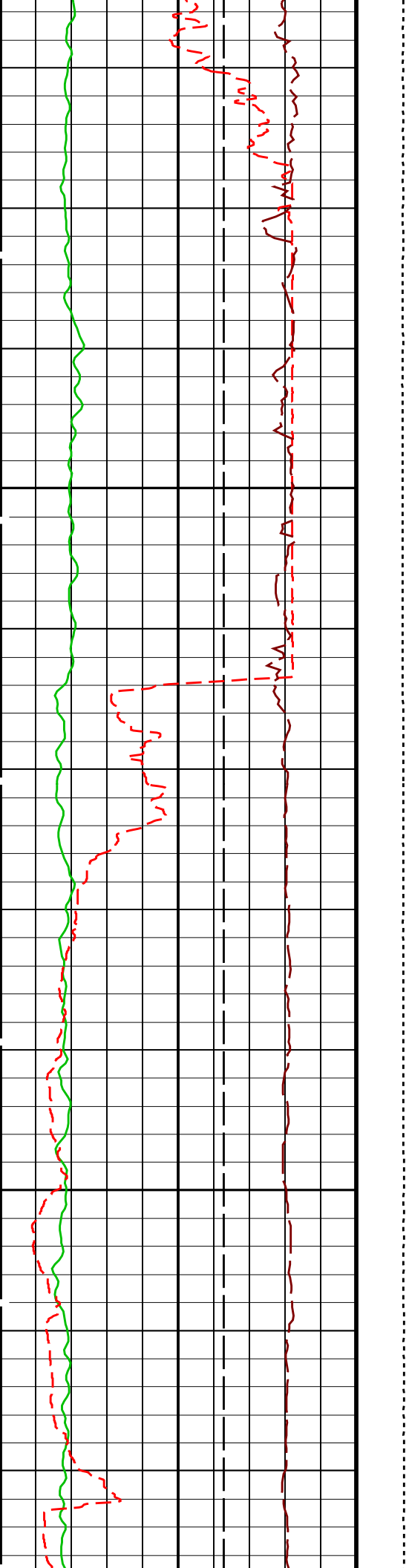
- ┆ Integrated Transit Time Minor Pip Every 1 MS
- ┆ Integrated Transit Time Major Pip Every 10 MS

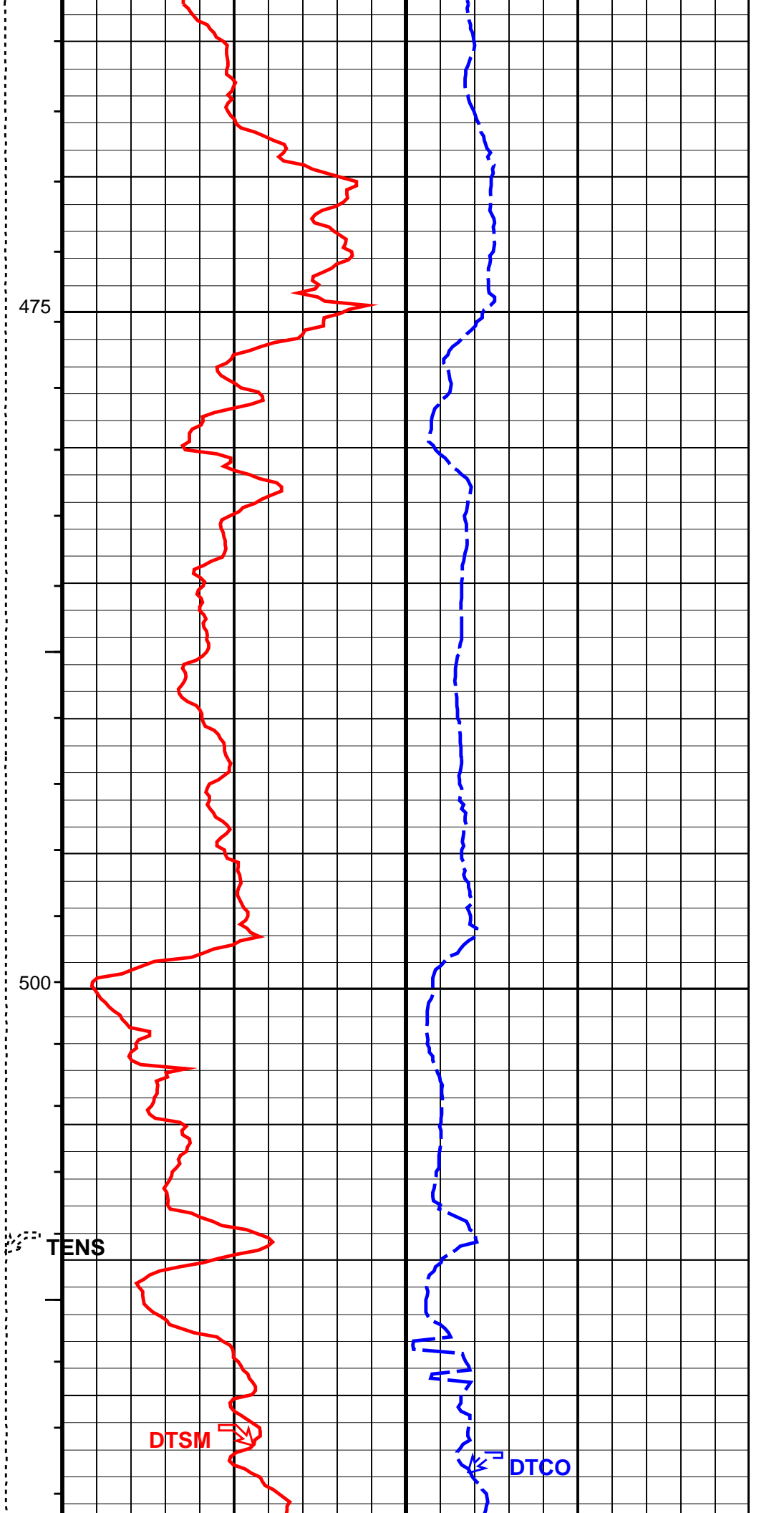
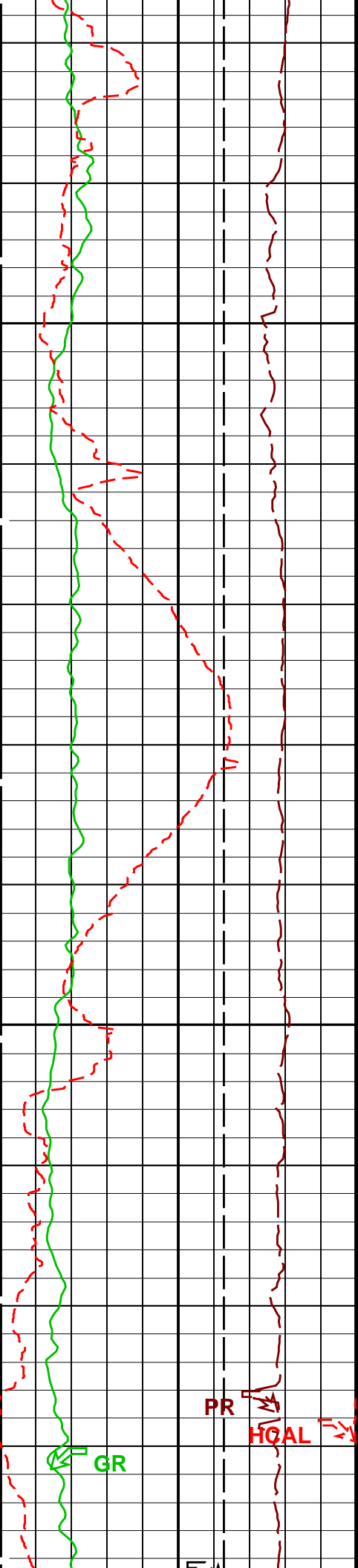
Time Mark Every 60 S

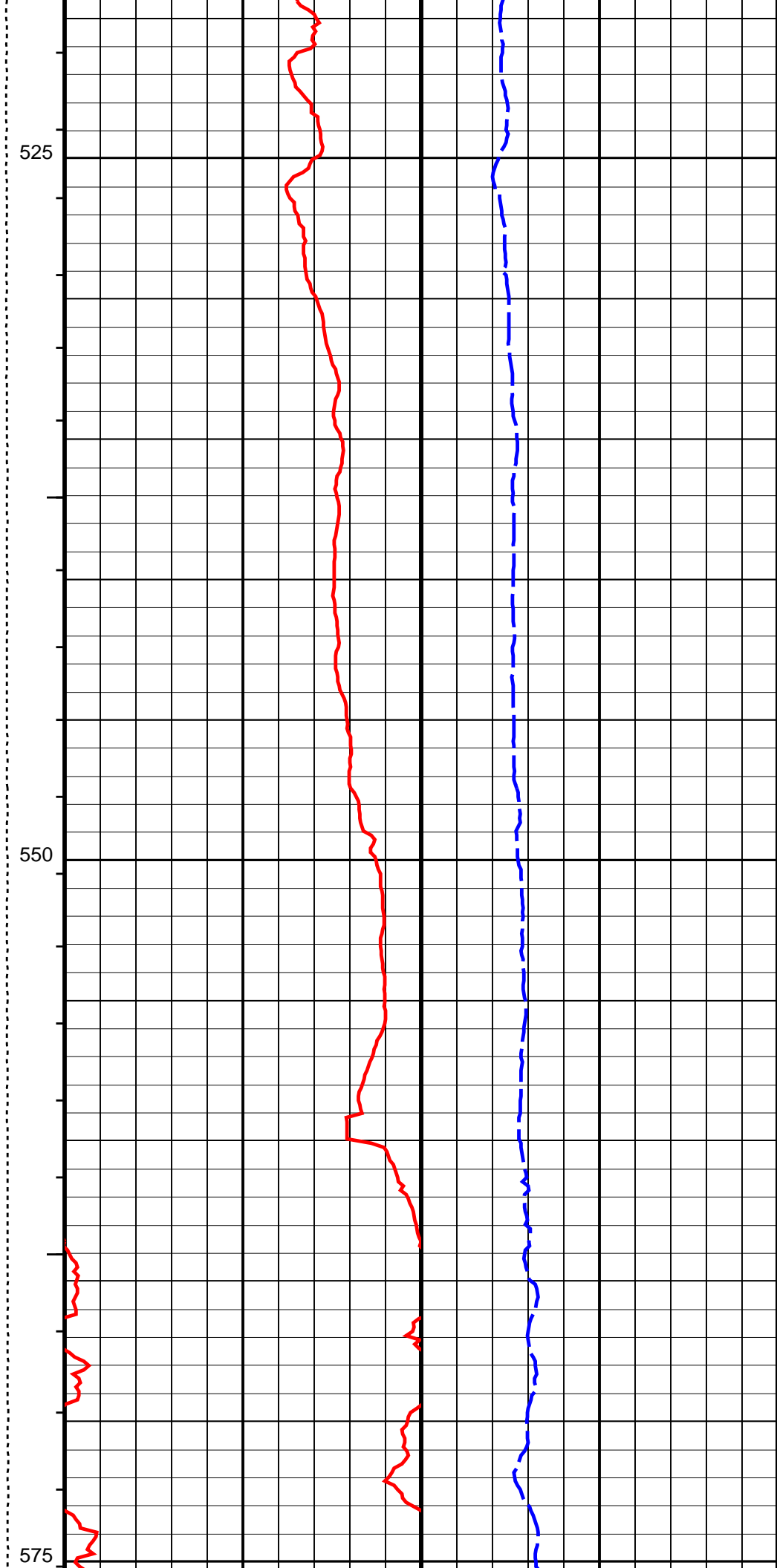
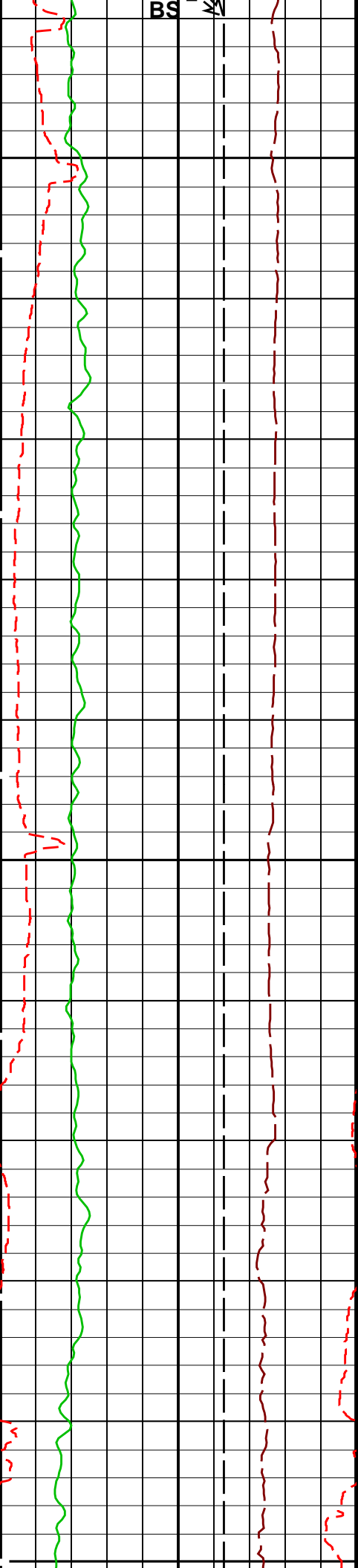


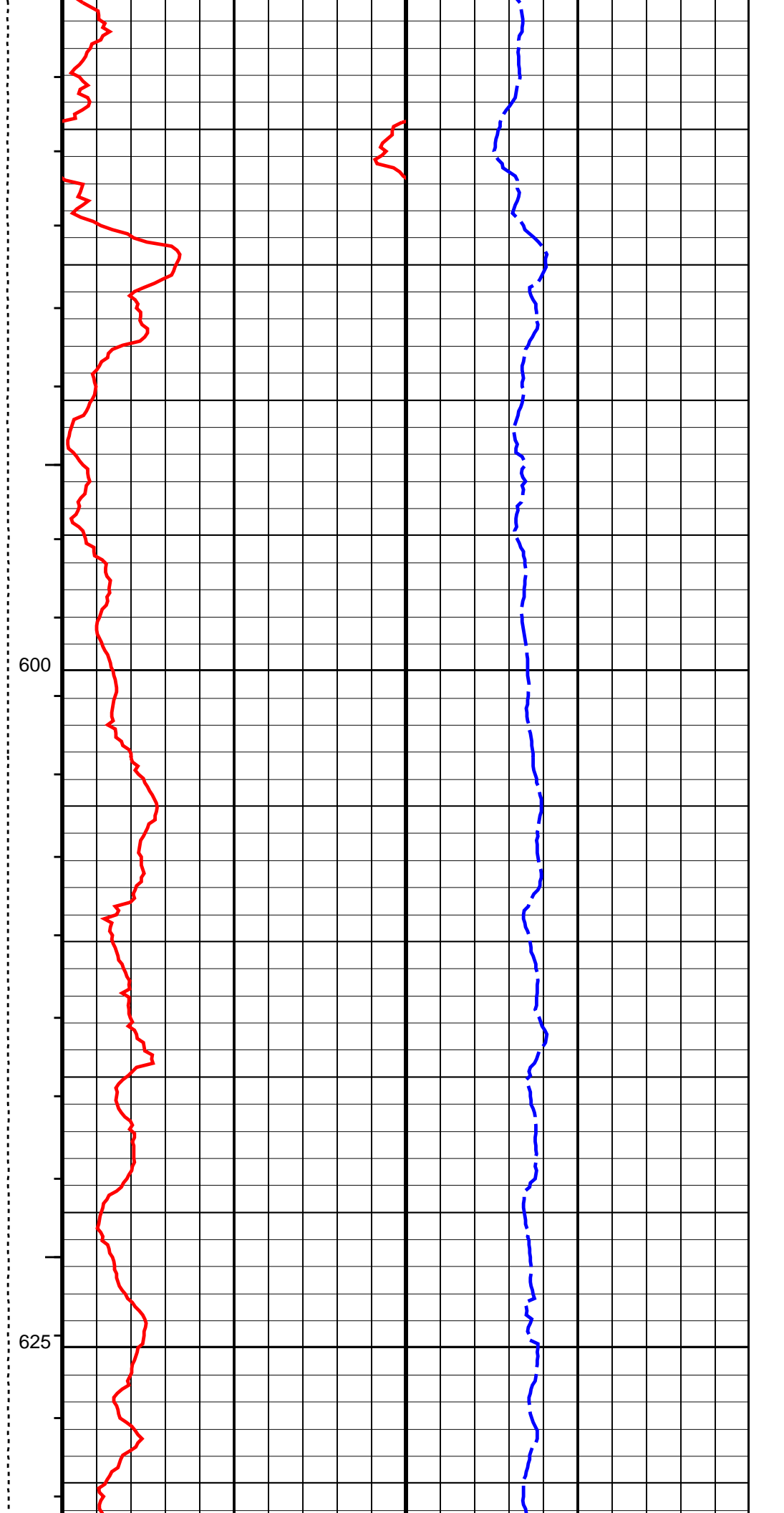
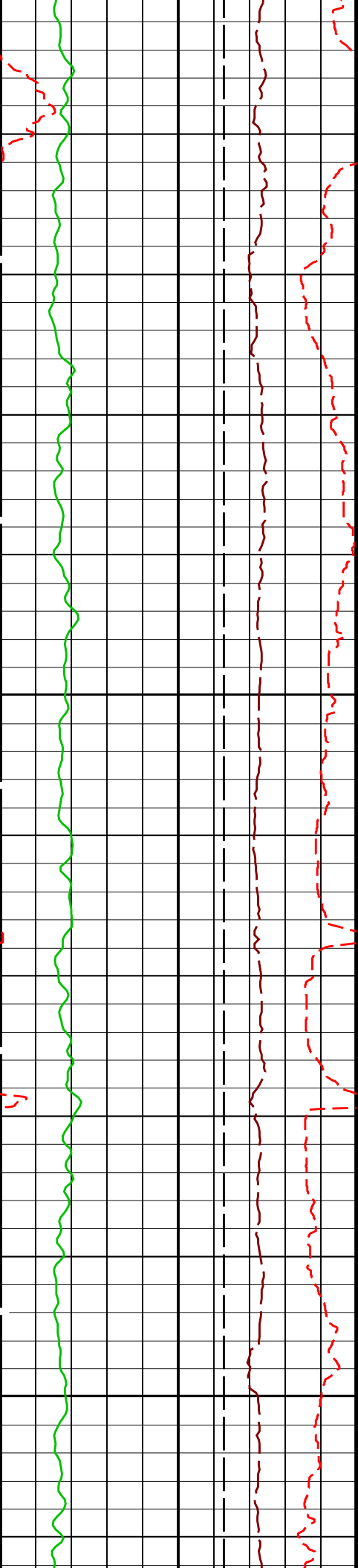


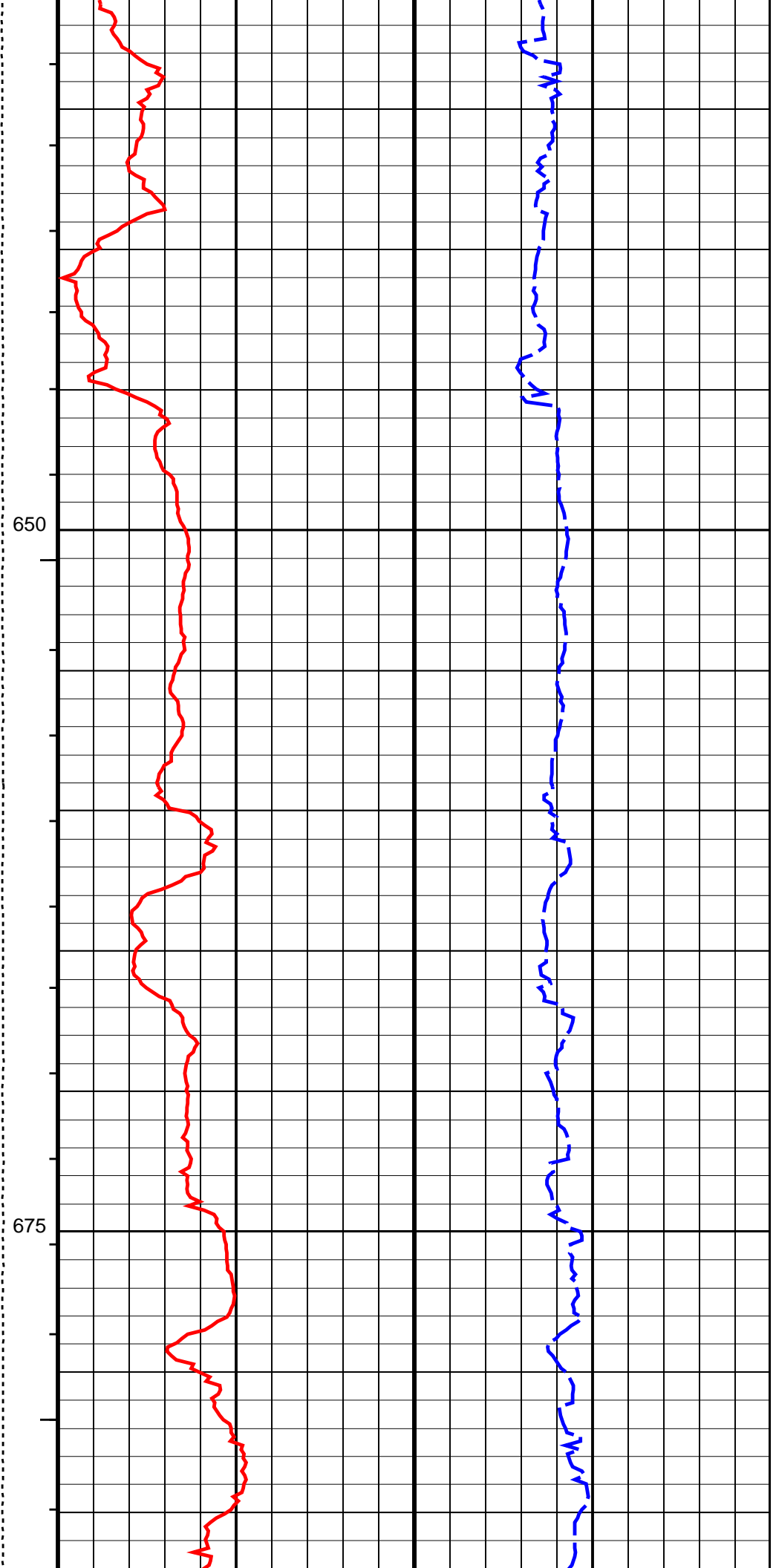
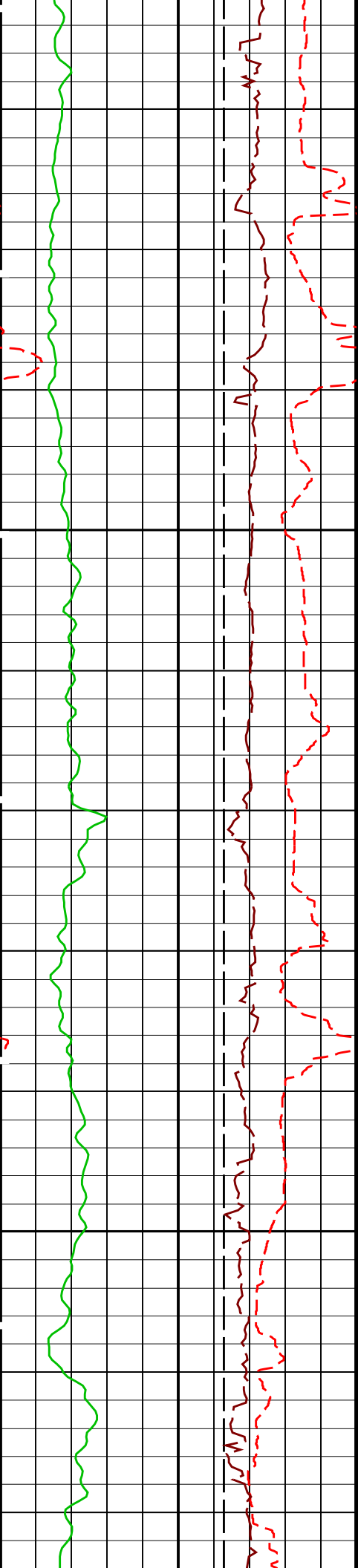


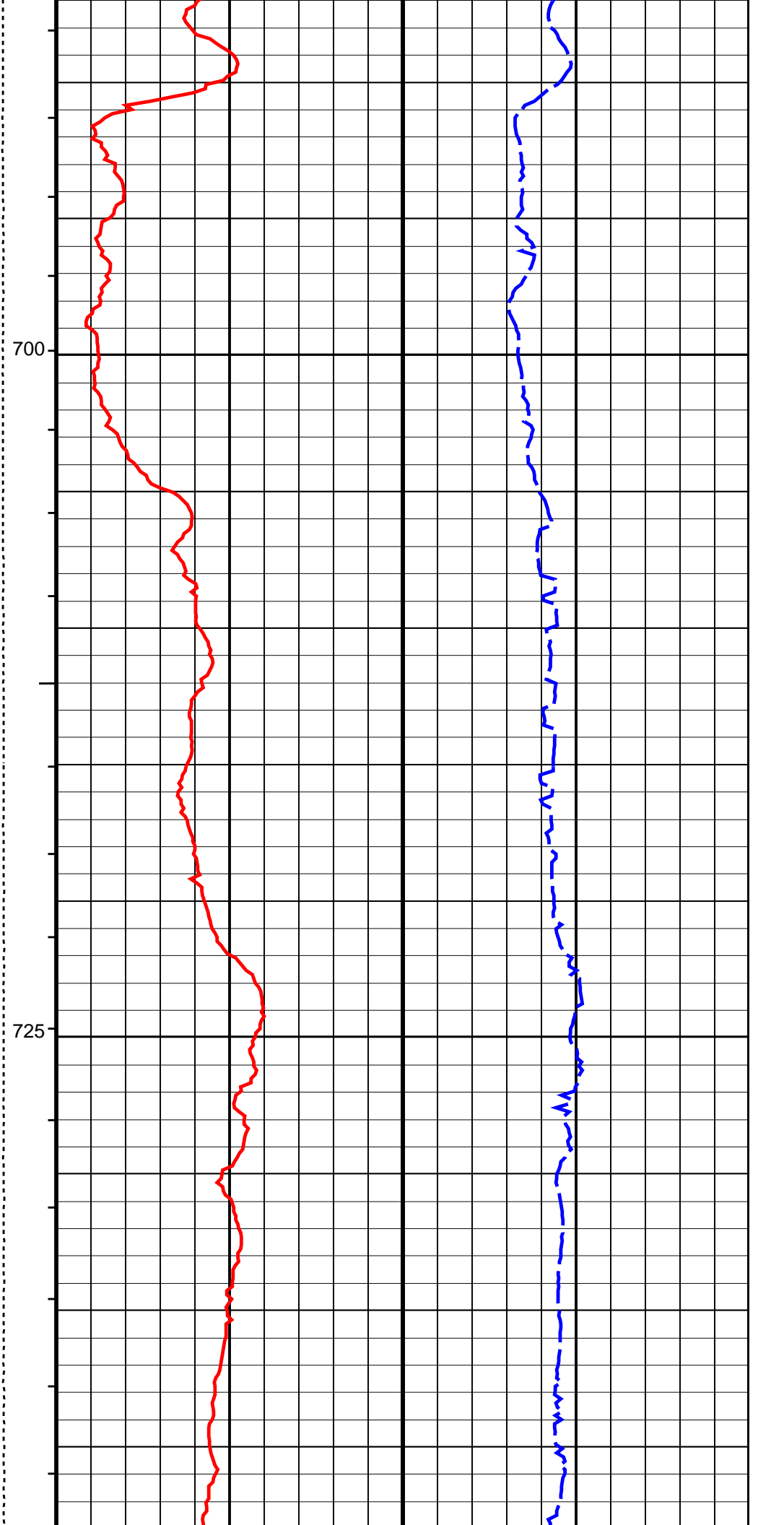
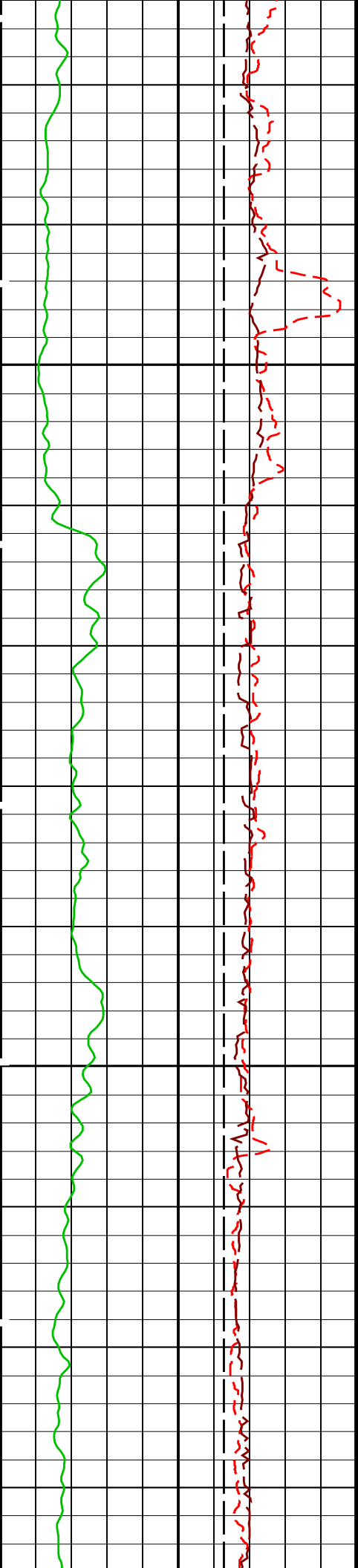


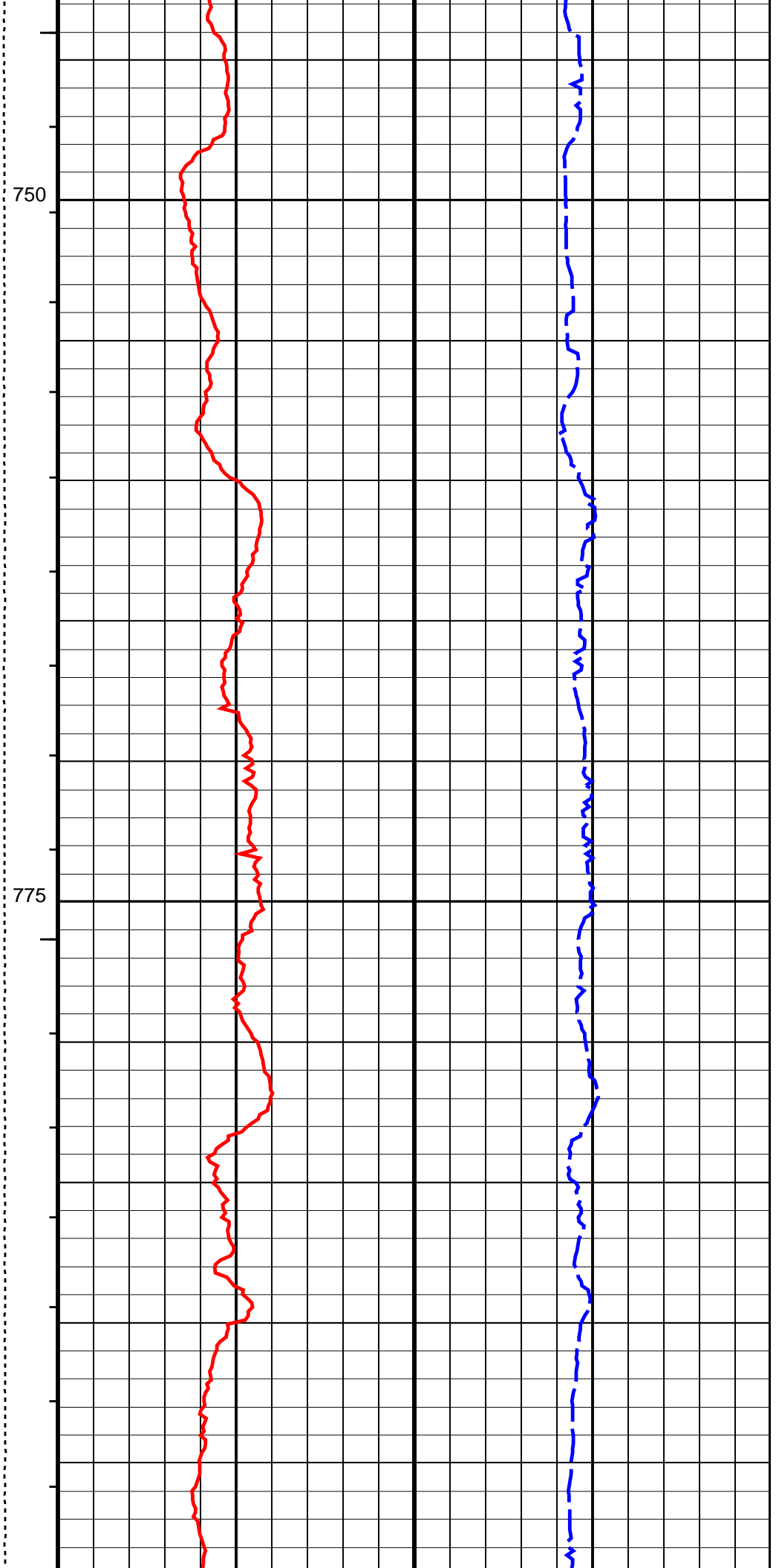
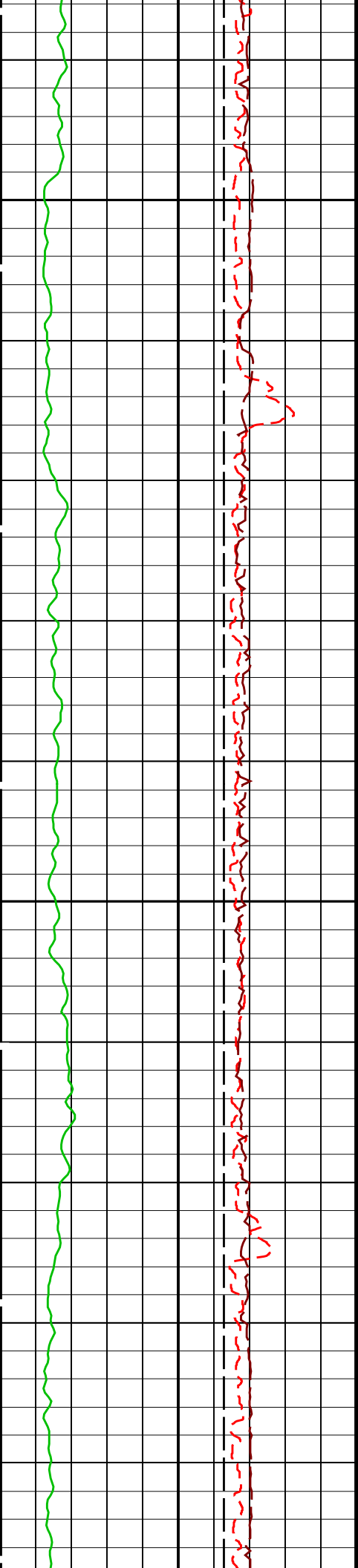


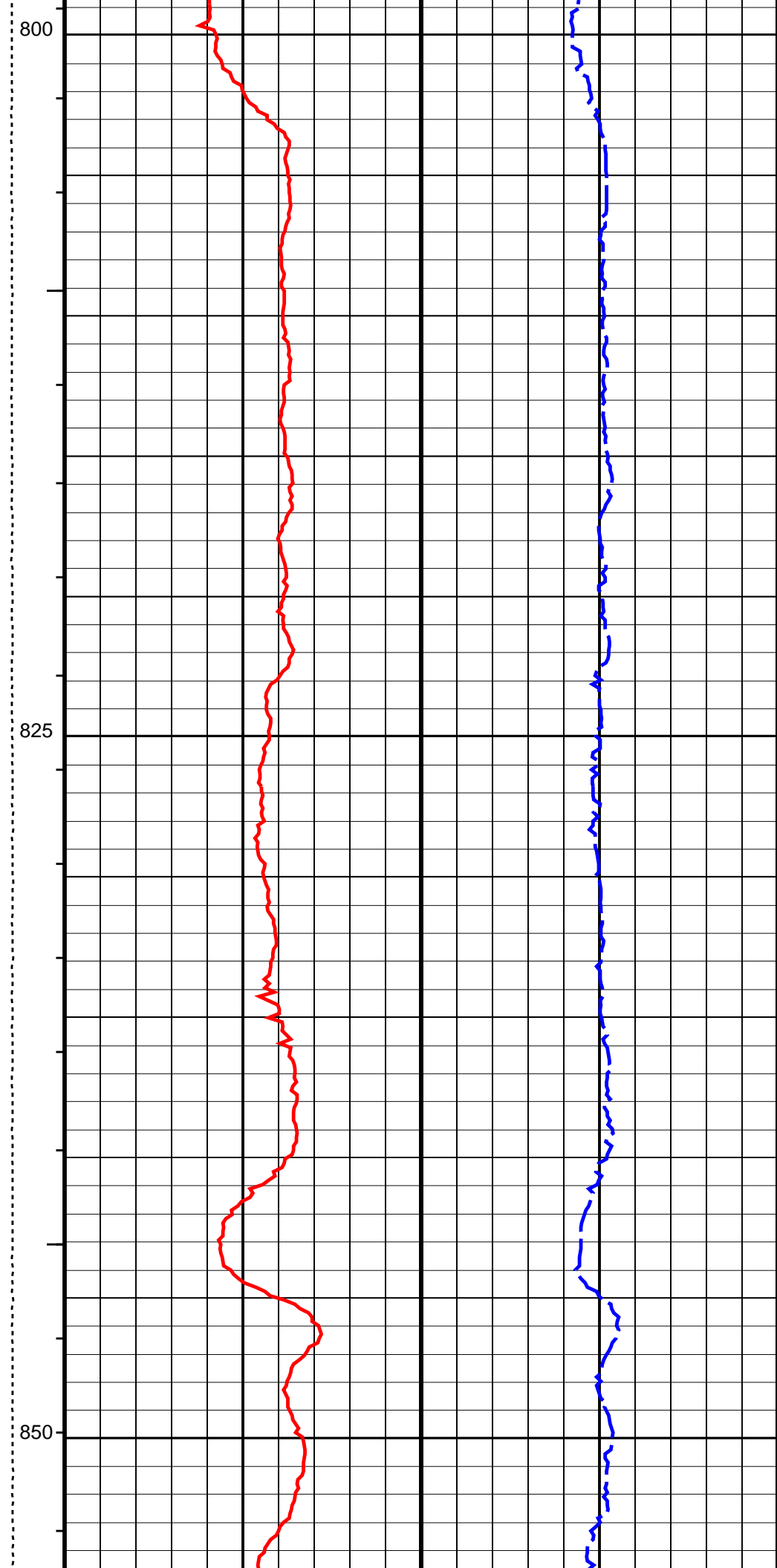
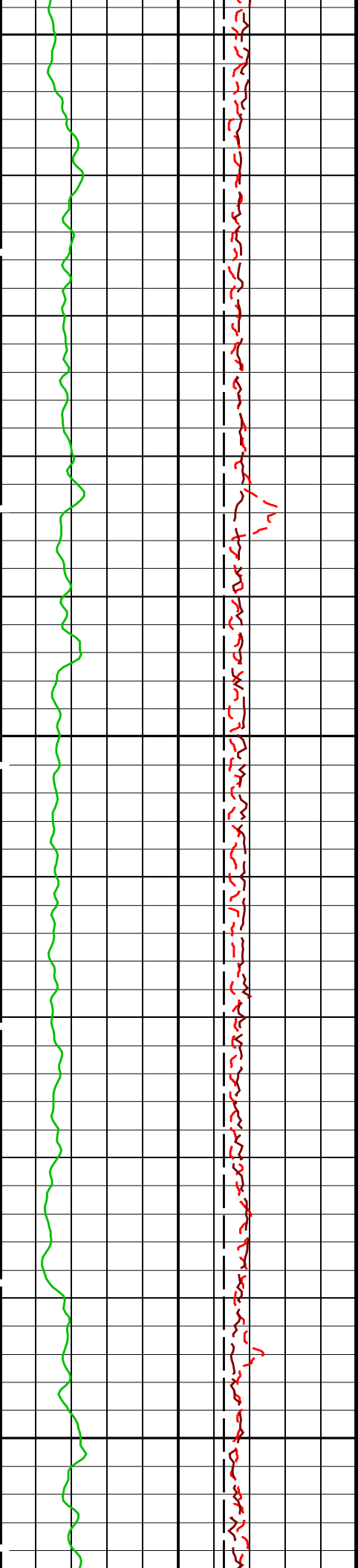


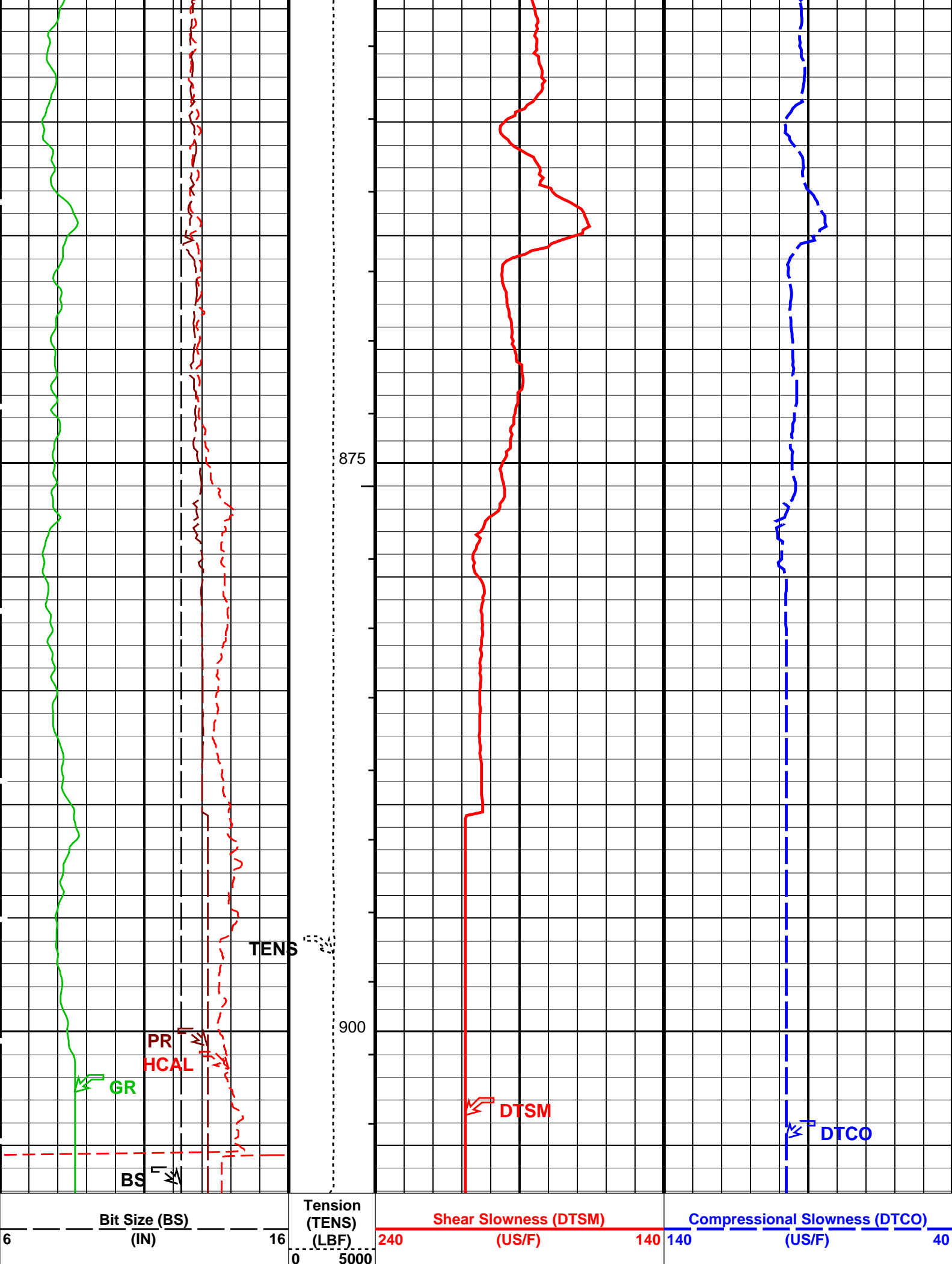












Gamma Ray (GR)		
0	(GAPI)	200
HILT Caliper (HCAL)		
6	(IN)	16
Poisson's Ratio (PR)		
0	(----	0.5

PIP SUMMARY

- ┆ Integrated Transit Time Minor Pip Every 1 MS
- ┆ Integrated Transit Time Major Pip Every 10 MS

Time Mark Every 60 S

Parameters

DLIS Name	Description	Value	
BHS	HILTB-FTB: High resolution Integrated Logging Tool-DTS Borehole Status	OPEN	
BHS	HRLT-B: High Resolution Laterolog Array - E Borehole Status	OPEN	
BHS	MAPC-B: Multimode Array Sonic Power Cartridge Borehole Status	OPEN	
BS	Bit Size	12.250	IN
DLHS	Hole Diameter Source for SOBS Channel	AUTO	
DTCO_SELECT	Delta-T Compressional Selection for DSTC	MF	
DTF	Delta-T Fluid	204.5	US/F
DTSH_SELECT	Delta-T Shear Selection for DSTC	XD	
ITTS	Integrated Transit Time Source	DTCO	
ROTWINDOW_CTRL	Alford Rotation Window Control	ON	
ROT_AI	Dipole Waveform Rotation Averaging Depth Interval	0	M
ROT_FIL LENG	Alford Rotation Filter Length	0	
ROT_TWD	Alford Rotation Window Time Width	0	US
ROT_TWO	Alford Rotation Window Time Offset	0	US
ROT_XFH	Alford Rotation Filter High Cutoff	0	HZ
ROT_XFL	Alford Rotation Filter Low Cutoff	0	HZ
BHS	EDTC-B: Enhanced DTS Cartridge Borehole Status	OPEN	
BHS	HOLEV: Integrated Hole/Cement Volume Borehole Status	OPEN	
CSIZ	Current Casing Size	13.375	IN
CWEI	Casing Weight	54.50	LB/F
DO	Depth Offset for Playback	0.0	M
PP	Playback Processing	RECOMPUTE	

Format: SONIC_D200 Vertical Scale: 1:200

Graphics File Created: 14-Mar-2008 10:29

OP System Version: 15C0-309

MCM

HILTB-FTB	SRPC-3546-Q1_2008_OP15	HRLT-B	SRPC-3546-Q1_2008_OP15
PPC1-B	SRPC-3546-Q1_2008_OP15	MAXS-B	SKK-3442-MAST
MAPC-B	SKK-3442-MAST	EDTC-B	SKK-3493-EDTCB
BSP-AH-169	SRPC-3546-Q1_2008_OP15		

Input DLIS Files

DEFAULT	Splice_TLD_MCFL_CNL_029CUP	FN:1	PRODUCER	14-Mar-2008 10:19	907.1 M	55.4 M
---------	----------------------------	------	----------	-------------------	---------	--------

Output DLIS Files

DEFAULT	TLD_MCFL_CNL_HRLA_030PUP	FN:48	PRODUCER	14-Mar-2008 10:29
REDUCED_DLIS	TLD_MCFL_CNL_HRLA_030PUP	FN:49	PRODUCER	14-Mar-2008 10:29